

Straight Jet Spray Nozzle

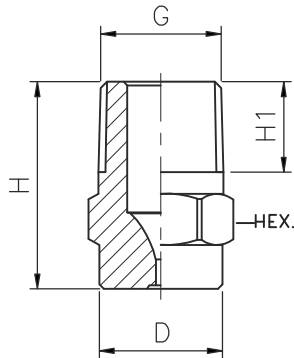


APPLICATION

- Paper cutting
- Paper slitting
- Component Washing machines
- Vehicles washing machines
- Floor washing machine

CL Series Straight Jet Spray Nozzle

CL



Compact stream jet with a defined jet length owing to optimum flow geometry. Flow conditions are not affected by turbulence. A concentrated jet with high impact force is achieved. This is used for powerful punctiform impact, wherever concentrated jet power is vital.

Characteristic : A high efficiency and economical performance is obtained.

Design : One Piece Construction.

Application : For High pressure cleaning systems, Jet Cutting and separating.

Features : Optimized flow maximum jet power concentrated energy.

MODEL NO.	CONNECTION END						ORIFICE SIZE (mm)	FLOW CAPACITY IN LPM AT DIFFERENT PRESSURE VALUES							MATERIAL CODE				
	YA	YB	YC	YD	YE	YF		Flow Capacity in GPM	Pressure [bar]							M1/M2	M3	P1/P2	
0° SPRAY ANGLE	1/8" BSPT	1/4" BSPT	3/8" BSPT	1/2" BSPT	3/4" BSPT	1" BSPT			40*psi	0.5	1.0	2.0	3.0	5.0	7.0	10.0	SS304/SS316	Brass	PVC/PP
	G/A DIMENSION. MM																		
	H	H1	D	HEX															
CL10.100	YA						1.1	0.31	0.50	0.71	1.00	1.22	1.58	1.87	2.24	YA			
CL10.150	YA						1.3	0.46	0.75	1.06	1.50	1.84	2.37	2.81	3.35	18	6.5	10.2	11
CL10.175	YA						1.4	0.54	0.87	1.24	1.75	2.14	2.77	3.27	3.91	Weight (Metals) = 8.0 gms. Approx			
CL10.200	YA						1.5	0.61	1.00	1.41	2.00	2.45	3.16	3.74	4.47				
CL10.250	YA	YB					1.7	0.77	1.25	1.77	2.50	3.06	3.95	4.68	5.59	YB			
CL10.350	YA	YB					2.0	1.07	1.75	2.47	3.50	4.29	5.53	6.55	7.83	22	10	13	14
CL10.400		YB					2.1	1.23	2.00	2.83	4.00	4.90	6.32	7.48	8.94	Weight (Metals) = 17.0 gms. Approx			
CL10.475		YB					2.3	1.46	2.37	3.36	4.75	5.82	7.51	8.89	10.62				
CL10.650		YB	YC				2.7	1.99	3.25	4.60	6.50	7.96	10.28	12.16	14.53	YC			
CL10.800		YB	YC				3.0	2.45	4.00	5.66	8.00	9.80	12.65	14.97	17.89	25	12	16	17
CL20.100		YB	YC				3.4	3.07	5.00	7.07	10.00	12.25	15.81	18.71	22.36	Weight (Metals) = 23.0 gms. Approx			
CL20.125		YB	YC				3.7	3.83	6.25	8.84	12.50	15.31	19.76	23.39	27.95				
CL20.160		YB	YC				4.2	4.90	8.00	11.31	16.00	19.60	25.30	29.93	35.78	YD			
CL20.200		YB	YC				4.7	6.13	10.00	14.14	20.00	24.49	31.62	37.42	44.72	Weight (Metals) = 51.0 gms. Approx			
CL20.225		YB	YC				5.0	6.90	11.25	15.91	22.50	27.56	35.58	42.09	50.31				
CL20.250			YC	YD			5.3	7.66	12.50	17.68	25.00	30.62	39.53	46.77	55.90	42			
CL20.320			YC	YD	YE		6.0	9.81	16.00	22.63	32.00	39.19	50.60	59.87	71.55	56	13.2	21	22
CL20.400			YC	YD	YE		6.7	12.26	20.00	28.28	40.00	48.99	63.25	74.83	89.44	Weight (Metals) = 70.0 gms. Approx			
CL20.520				YD	YE	YF	7.6	15.94	26.00	36.77	52.00	63.69	82.22	97.28	116.28	YF			
CL20.650				YD	YE	YF	8.5	19.92	32.50	45.96	65.00	79.61	102.77	121.60	145.34	42	14.5	32	27
CL20.720					YE	YF	9.0	22.07	36.00	50.91	72.00	88.18	113.8	134.7	161.00	Weight (Metals) = 90.0 gms. Approx			
CL20.800					YE	YF	9.5	24.52	40.00	56.57	80.00	97.98	126.49	149.67	178.89	YF			
CL30.100					YE	YF	10.6	30.65	50.00	70.71	100.0	122.47	158.11	187.08	223.61	56	16.8	39	36
CL30.118					YE	YF	11.5	36.17	59.00	83.44	118.0	144.52	186.57	220.76	263.86	Weight (Metals) = 90.0 gms. Approx			
CL30.130						YF	12.1	39.85	65.00	91.92	130.0	159.22	205.55	243.21	290.69				
CL30.160						YF	13.4	49.05	80.00	113.14	160.0	195.96	252.98	299.33	357.77				

• X – BSPP, Y- BSPT, Z – NPT, As Required

• *Flow rate in US GPM @40 psi Pressure

• Special Material on Request